

## TADANO CARGO CRANE

MODEL : **TM-ZE264MH** ----- with hook stowing device

## CRANE SPECIFICATIONS

<u>CRANE CAPACITY</u>	2,630 kg at 1.6 m (4-part lines)
<u>BOOM</u>	Four-sectioned, fully powered partly synchronized telescoping boom of pentagonal box construction Retracted length ----- 2.87 m Extended length ----- 8.6 m Extending speed ----- 5.73 m / 12 s Elevation ----- Elevated by a double-acting hydraulic cylinder Elevating speed ----- 1° to 76° / 6 s Boom point ----- 2 sheaves
<u>WINCH</u>	Hydraulic motor driven    Spur gear speed reduction, provided with mechanical brake Single line pull ----- 6.47 kN {660 kgf} Single line speed ----- 68 m/min.(at 4th layer) Wire rope Diameter x length ---- 8 mm x 54 m Breaking strength ---- 43.1 kN {4.39 tf} Construction ----- 7 x 7 + 6 x WS(26) Hook block -----2 sheaves
<u>HOOK STOWING DEVICE</u>	Mechanically stowed beneath boom top portion

SLEWING Hydraulic motor driven Worm gear speed reduction  
Continuous 360° full circle slewing on ball bearing slew ring  
Automatic slewing lock  
Slewing speed -----  $2.5 \text{ min}^{-1}$  {rpm}

OUTRIGGERS Manually extended sliders and hydraulically extended jacks  
Integral with crane frame Power up and down  
Extension width ----- Min. 1,720 mm  
Mid. 2,400 mm  
Max. 3,000 mm

HYDRAULICS Hydraulic pump----- Single gear pump  
Hydraulic motors ----- Axial piston type for winch  
Axial piston type for slewing  
Control valves ----- Multiple control valves with  
Integral safety valve  
Oil tank capacity ----- approx. 22 L

SAFETY DEVICES Load meter  
Load indicator  
Over-winding alarm  
Anti-two-block device  
P.T.O indicator lamp  
Hook safety latch  
Hydraulic safety valves, check valves and holding valves  
Level gauge

CRANE MASS Approx. 965 kg (includes standardized mounting parts)

NOTE : Operating speeds of the crane are guaranteed under the condition that the pump delivery is 53 L /min.

## RATED LIFTING CAPACITIES IN KILOGRAMS

### Crane Strength Rated Capacities

Load Radius	2.87 m / 4.82 m Boom	Load Radius	6.71 m Boom	Load Radius	8.6 m Boom
1.6 m and below	2,630	2.8 m and below	1,280	4.0 m and below	700
1.8 m	2,230	3.0 m	1,230	4.5 m	630
2.0 m	2,030	3.5 m	1,080	5.0 m	550
2.5 m	1,630	4.0 m	930	6.0 m	450
3.0 m	1,330	4.5 m	780	7.0 m	380
3.5 m	1,130	5.0 m	700	8.0 m	330
4.0 m	980	5.5 m	630	8.4 m	310
4.62m	830	6.0 m	580		
		6.51m	530		

- NOTES : 1. The mass of hook block (30kg), slings and all similarly used load lifting devices must be added to the mass of the load.
2. The above numerical values of total rated loads are based on crane strength only. The total rated loads based on stability may lower than those in the above table depending on the loading conditions and the types of the chassis.

### Empty Chassis Rated Capacities

Table A

Load Radius	2.87 m / 4.82 m Boom		Load Radius	6.71 m Boom	Load Radius	8.6 m Boom
	Extension width of outriggers			Extension width of outriggers		Extension width of outriggers
	Maximum	Minimum		Maximum		Maximum
1.6 m and below	2,630	1,580	2.6 m and below	1,230	3.8 m and below	680
1.8 m	2,230	1,230	2.8 m	1,130	4.0 m	630
2.0 m	2,030	980	3.0 m	1,030	4.5 m	530
2.5 m	1,480	630	3.5 m	780	5.0 m	430
3.0 m	1,030	480	4.0 m	630	6.0 m	330
3.5 m	780	380	4.5 m	530	7.0 m	250
4.0 m	630	280	5.0 m	430	8.0 m	200
4.62m	480	230	5.5 m	380	8.4 m	180
			6.0 m	350		
			6.51m	300		

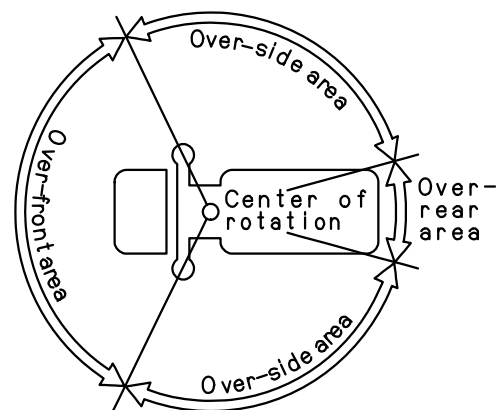
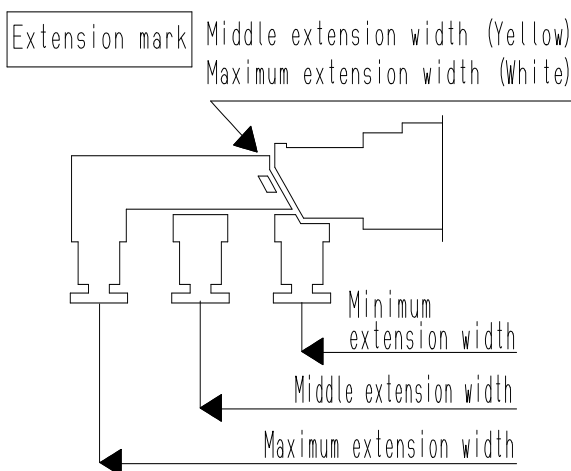
Table C

Load Radius	2.87 m / 4.82 m Boom		Load Radius	6.71 m Boom	Load Radius	8.6 m Boom
	Extension width of outriggers			Extension width of outriggers		Extension width of outriggers
	Maximum	Minimum		Maximum		Maximum
1.6 m and below	2,630	1,580	2.8 m and below	1,230	4.0 m and below	680
1.8 m	2,230	1,230	3.0 m	1,130	4.5 m	580
2.0 m	2,030	980	3.5 m	880	5.0 m	480
2.5 m	1,530	630	4.0 m	680	6.0 m	380
3.0 m	1,130	480	4.5 m	580	7.0 m	280
3.5 m	880	380	5.0 m	480	8.0 m	230
4.0 m	680	280	5.5 m	400	8.4 m	200
4.62m	530	230	6.0 m	380		
			6.51m	330		

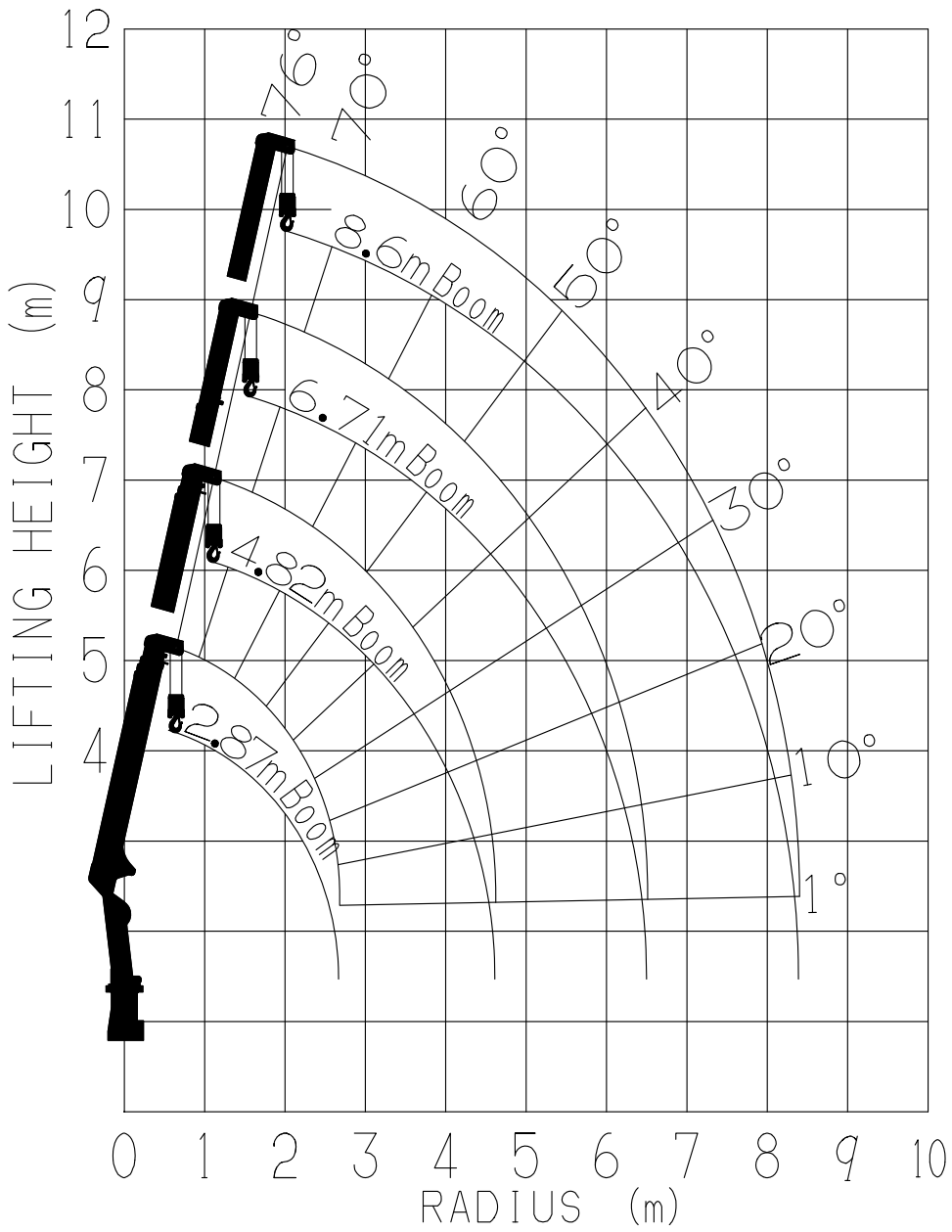
Table D

Load Radius	2.87 m / 4.82 m Boom		Load Radius	6.71 m Boom	Load Radius	8.6 m Boom
	Extension width of outriggers			Extension width of outriggers		Extension width of outriggers
	Maximum	Minimum		Maximum		Maximum
1.6 m and below	2,630	1,580	2.8 m and below	1,280	4.0 m and below	700
1.8 m	2,230	1,230	3.0 m	1,230	4.5 m	630
2.0 m	2,030	980	3.5 m	1,080	5.0 m	550
2.5 m	1,630	630	4.0 m	930	6.0 m	450
3.0 m	1,330	480	4.5 m	780	7.0 m	380
3.5 m	1,130	380	5.0 m	700	8.0 m	330
4.0 m	980	280	5.5 m	630	8.4 m	310
4.62m	830	230	6.0 m	580		
			6.51m	530		

- NOTES :
1. Empty Chassis Rated Capacities in these tables depend on condition that crane is set level on firm level ground.
  2. The mass of hook block (30 kg), slings and all similarly used load lifting devices must be added to the mass of load.
  3. For boom lengths not shown, use the rated lifting capacity of next longer boom.
  4. When outriggers are extended to middle extension width, use the rated lifting capacities for outriggers are extended to minimum extension width .
  5. For boom lengths longer than 4.82m, extend outriggers to maximum extension width.
  6. When the boom length is 6.71 m, a half of the  $\square$  mark on lateral face of the 3rd boom section is exposed out of the 2nd boom section.
  7. Empty Chassis Rated Capacities table A ,C and D depend on the types of chassis.
  8. Empty Chassis Rated Capacities are shown for over-side areas and over-rear area. These capacities for over-front area may be lowered depending on the types of chassis.

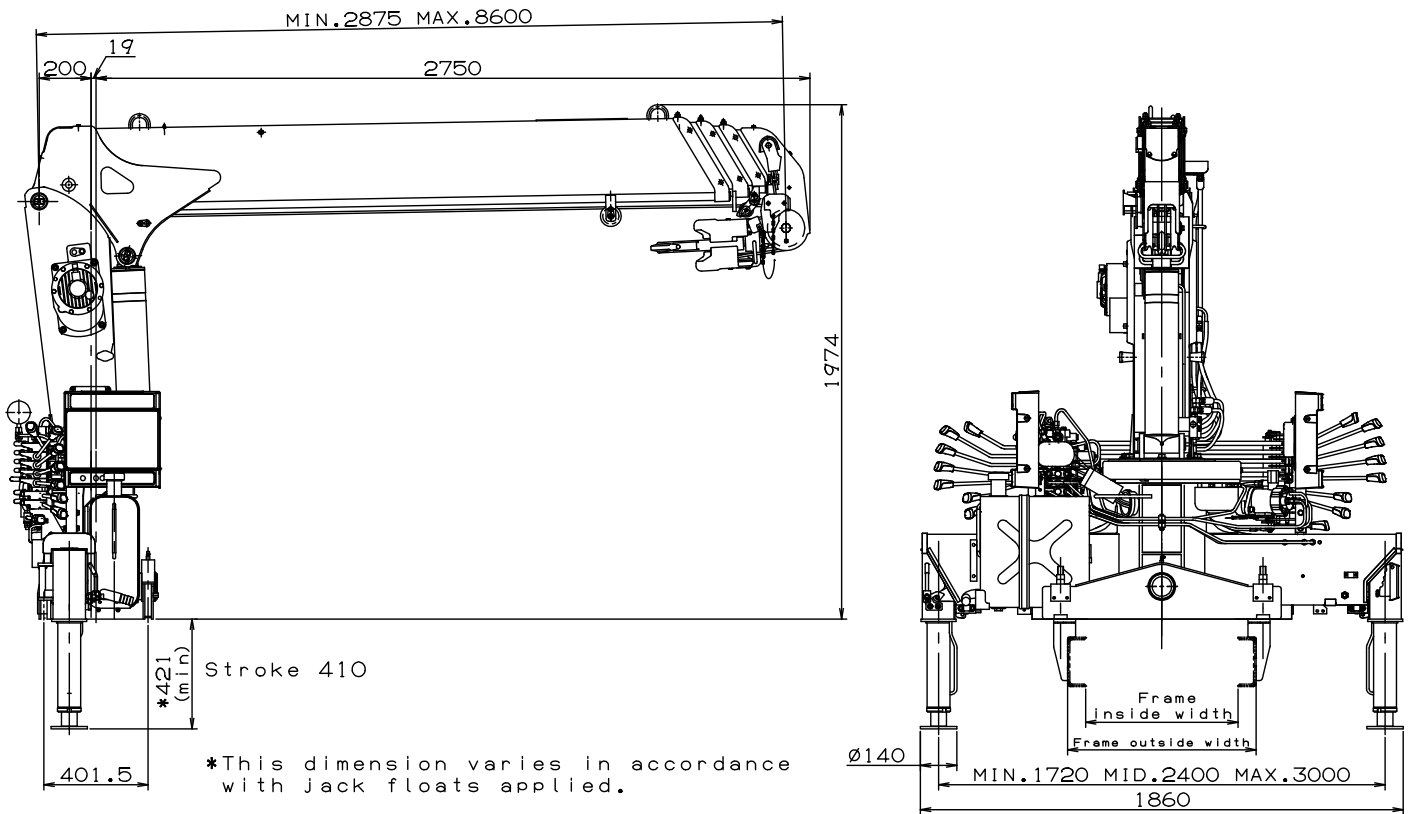


### WORKING RANGE



NOTE: The above lifting heights and boom angles are based on a straight (unladen) boom, and allowance should be made for boom deflection obtained under laden conditions.

## DIMENSIONS



## GENERAL DATA FOR SUITABLE TRUCKS

- Gross vehicle mass (including crane mass) ----- 4,500 to 8,000 kg
  - P.T.O. torque -----140 N-m {14.3 kgf-m} min.
  - P.T.O. revolution ----- Approx. 300 to 1,700 min<sup>-1</sup> {rpm}
  - Width for crane mounting ----- Approx. 605 mm min.
  - Frame ----- Weight distribution and frame strength should be calculated for each truck
  - Frame width range (inside to outside) ----- Approx. 680 to 790 mm
  - Frame height (ground to frame top) ----- Approx. 1,010 mm max.
- (Height of crane mounting base can be changed by combination of jack floats and crane bases)